



SOME LINES SHOULD
NEVER BE CROSSED

LEFT OF CENTER

Left of Center, a psychological thriller set in a small town in the rolling plains of Northeastern Oklahoma, focuses on a series of homicides along Highway 177. The murders cause a strained relationship between highway patrol officer Trooper Ferguson (J Bryson Baker) and local police chief Tom Parker (Jason Wilkinson), who are both personally invested in finding the killer. In efforts to solve the murders and put the town at ease, the lives of the two men converge through a series of encounters, as well as a startling revelation as the truth surfaces. Through a tangled web of obsession and deceit, Left of Center magnifies life in a tightly knit community while exposing its

push.™

Push Worldwide
Current Address?

818.343.8980
www.pushworldwide.com

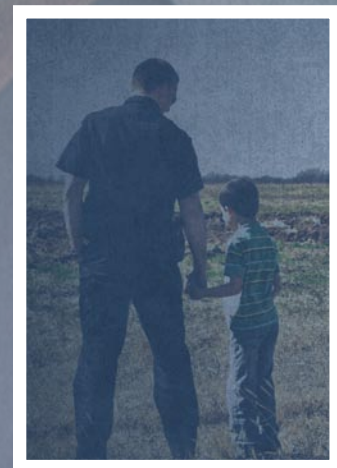
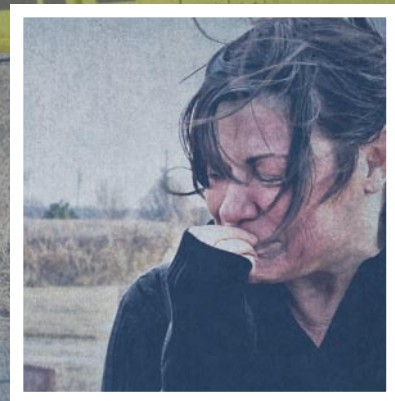
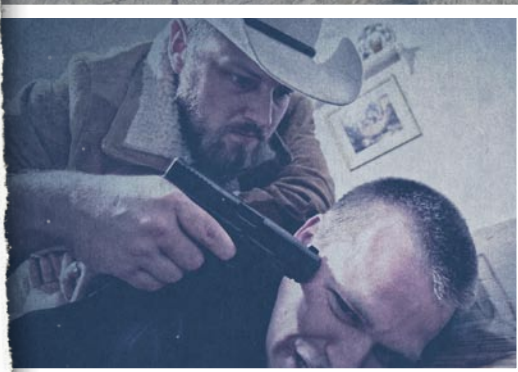
CRIME SCENE-DO NOT ENTER

LEFT OF CENTER

Left of Center, a psychological thriller set in a small town in the rolling plains of Northeastern Oklahoma, focuses on a series of homicides along Highway 177.

The murders cause a strained relationship between highway patrol officer Trooper Ferguson (J Bryson Baker) and local police chief Tom Parker (Jason Wilkinson), who are both personally invested in finding the killer.

In efforts to solve the murders and put the town at ease, the lives of the two men converge through a series of encounters, as well as a startling revelation as the truth surfaces. Through a tangled web of obsession and deceit, Left of Center magnifies life in a tightly knit community while exposing its dark secrets.



© Copyright 2013 - Push Worldwide

LOC PRODUCTIONS PRESENTS LEFT OF CENTER

A FILM BY DAVID A. NORMAN PRODUCED BY RICHARD HALPERN STARRING J. BRYSON BAKER, JASON WILKINSON, JAMI HARRIS, LAUREN CASTER, BRIAN GILLILAND, TAM JACKSON AND DUSTIN WILSON
ORIGINAL MUSIC BY BROOKS BALL 2ND UNIT DIRECTOR WALTER LOWE PRODUCTION DESIGNER REBEKAH BELL ART DIRECTOR COLIN WARDE FX MAKE-UP HOLLY AMOS PRODUCTION MANAGER LAURILYN RIEHL HARRIS
EXECUTIVE PRODUCER PHIL HALPERN CO-PRODUCER ART D'ALESSANDRO DIRECTOR OF PHOTOGRAPHY DAVID A. NORMAN SCREENPLAY BY BRANDI JENKINS PRODUCED BY RICHARD HALPERN DIRECTED BY DAVID A. NORMAN

www.pushworldwide.com